

Sotheby's

INTERNATIONAL REALTY

3900 RONDA ROAD

PEBBLE BEACH | \$6,200,000



GLORIA MASSEY

gloria.massey@sothebyshomes.com

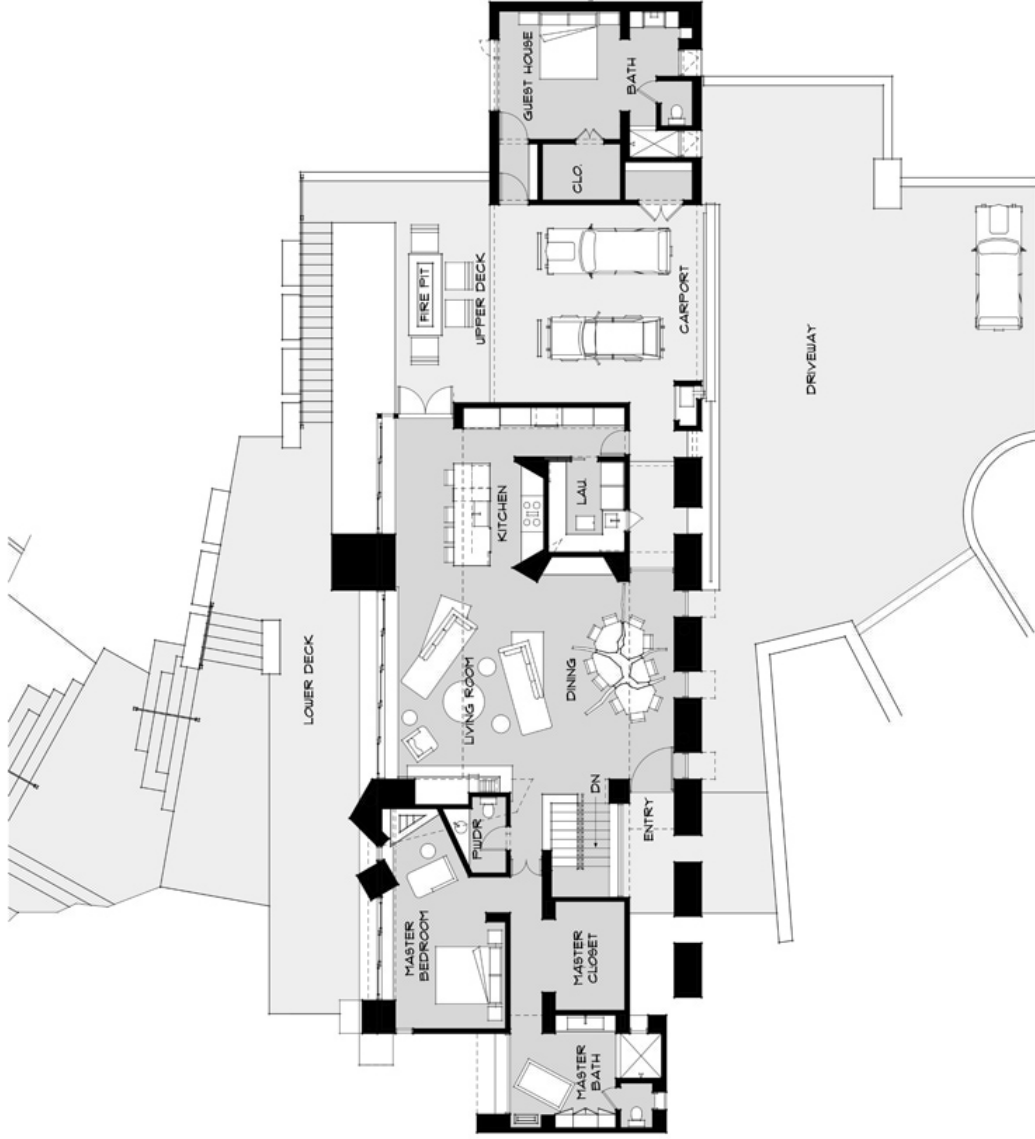
831.747.0233

CalBRE#: 02012940

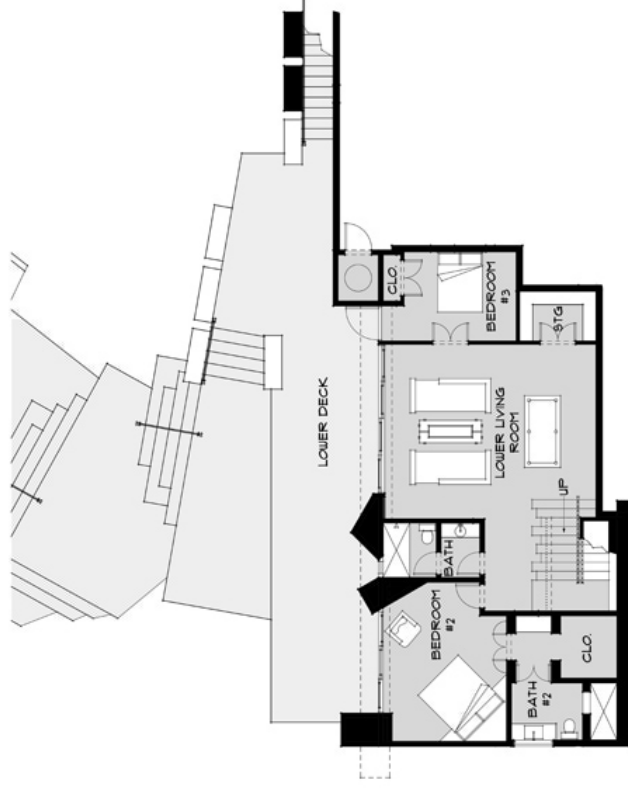
Located on the ridge in the Estates area of Pebble Beach, this contemporary masterwork designed by Conrad Sanchez of Conrad Asturi Studios features superb design details, luxury amenities and an indoor/outdoor lifestyle. Mature Coastal Oak trees shield the entry to the property, providing privacy in a spectacular landscape. The beautiful ocean view is framed by expansive window walls on 2 floors. An open plan greatroom has a stunning hearth that anchors the design, with its custom steel and wood dining table and chef's kitchen it's the perfect place to live and entertain. The residence features 2 master suites plus a third bedroom as well as an attached guesthouse with bath for a total of 4 bedrooms and 4.5 baths. The breezeway connecting the guest and main residence has an outdoor kitchen and lounge area.

Sotheby's International Realty and the Sotheby's International Realty logo are registered (or unregistered) service marks used with permission. Operated by Sotheby's International Realty, Inc. If your property is listed with a real estate broker, please disregard. It is not our intention to solicit the offerings of other real estate brokers. We are happy to work with them and cooperate fully. Real estate agents affiliated with Sotheby's International Realty, Inc. are independent contractor sales associates and are not employees of Sotheby's International Realty, Inc.

3900 RONDA RD. PEBBLE BEACH, CA



3900 RONDA RD - PEBBLE BEACH
UPPER FLOOR PLAN



3900 RONDA RD - PEBBLE BEACH
LOWER FLOOR PLAN